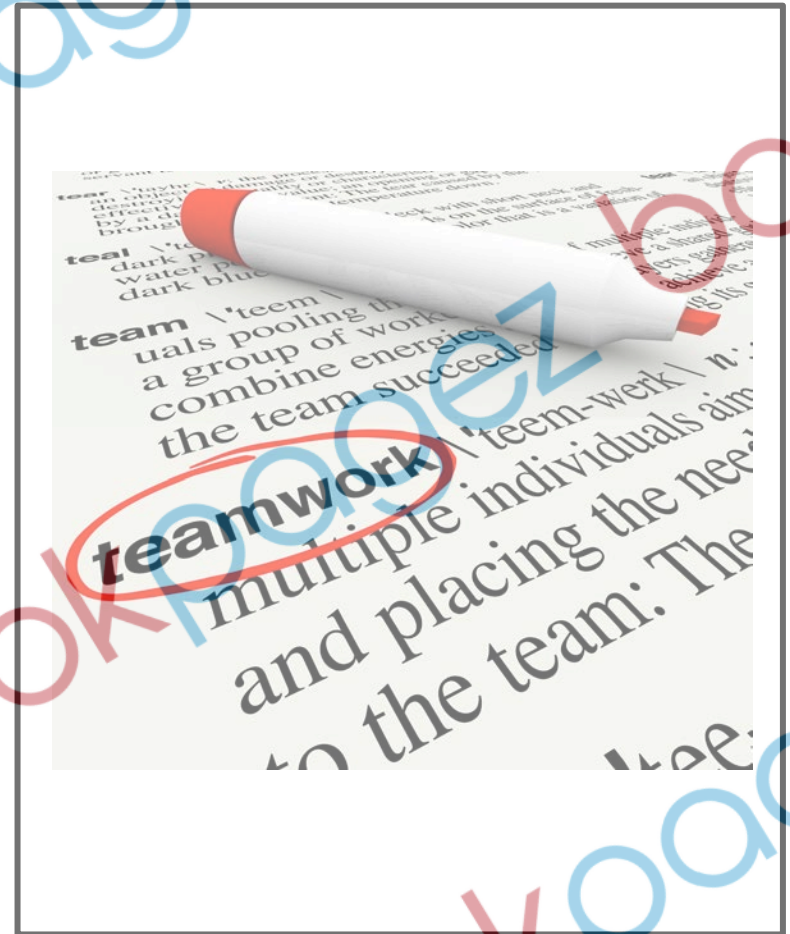


# GLOSSARY

A **glossary** is an alphabetical list of important words in a text. **Glossaries** help readers understand the most important words in a text.



# INDEX

An **index** is an alphabetical list of important topics and the page numbers where the topic can be found in the text. The **index** helps readers find information quickly.

## Index

### Earth

2, 6, 10, 15

### Planets

2, 10, 12, 16,  
22, 28 - 34, 40

### Stars

8, 13, 17 - 21,  
26, 35 - 40, 47

### Sun

2, 7, 11, 21, 25,  
30 - 32, 43

### The Milky Way

4 - 6, 15, 28, 30,

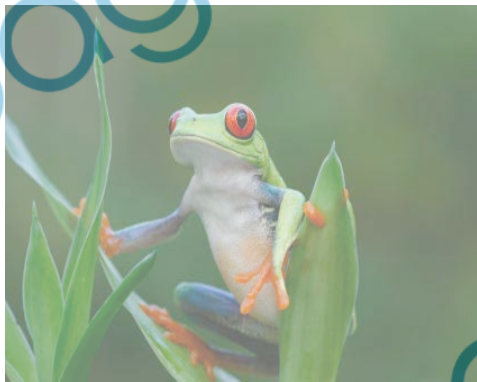
### Universe

8, 13, 17 - 21, 26,

# CAPTIONS

**Captions** words placed near an image that describe the image.

**Captions** help readers understand what's happening in an image.



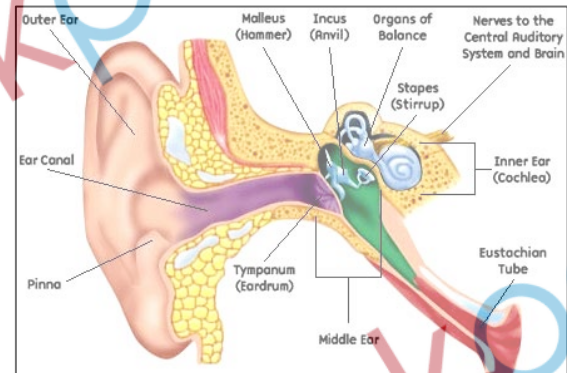
**Red Eyed Tree Frogs** are medium sized frogs who grow to be around 3 inches long.

# DIAGRAMS

A **diagram** is a drawing that has been labeled.

A **diagram** helps readers understand the parts of people, places, or things in the text.

## Diagram of the Human Ear



# HEADINGS

**Headings** are words or phrases at the beginning of a new section or chapter.

**Headings** help readers know what the section or chapter is about.

## Puppies, Puppies, Puppies!

### How to Care for a Newborn Puppy

Newborn puppies are cute and cuddly, but you need to give them special care if you want them to be healthy and strong.

When a puppy is first born it needs a warm safe place where it can sleep and eat. The best place is usually with its mother who will give the puppy what it needs to grow.

# INDEX

An **index** is an alphabetical list of important topics and the page numbers where the topic can be found in the text. The **index** helps readers find information quickly.

## Index

### Earth

2, 6, 10, 15

### Planets

2, 10, 12, 16,  
22, 28 - 34, 40

### Stars

8, 13, 17 - 21,  
26, 35 - 40, 47

### Sun

2, 7, 11, 21, 25,  
30 - 32, 43

### The Milky Way

4 - 6, 15, 28, 30,

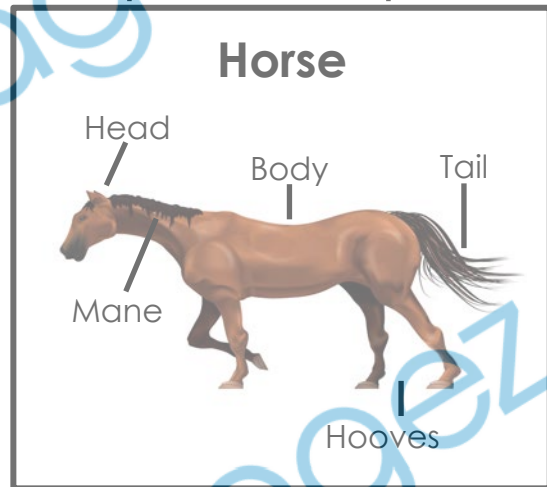
### Universe

8, 13, 17 - 21, 26,

# LABELS

**Labels** are words that name a specific part of a picture or photograph.

**Labels** help readers understand images by pointing out the most important parts.



# LISTS

A **list** is a series of things that are connected.

**Lists** are usually printed with bullets or numbers.

**Lists** help readers by making information easier to read.

## 10 Activities for Summer Fun

1. Run through a sprinkler
2. Have a bubble gum blowing contest
3. Build a tree house or fort
4. Start a collection (rocks, bugs)
5. Make S'mores
6. Learn to juggle
7. Have a watermelon seed spitting contest
8. Sleep under the stars
9. Start a book club
10. Start a band or have a sing along

## SUBTITLES

**Subtitles** are words that appear under the heading. **Subtitles** help readers by telling the reader the topic of the paragraph or section of text that comes next.

### Puppies, Puppies, Puppies!

#### How to Care for a Newborn Puppy

Newborn puppies are cute and cuddly, but you need to give them special care if you want them to be healthy and strong.

When a puppy is first born it needs a warm safe place where it can sleep and eat. The best place is usually with its mother who will give the puppy what it needs to grow.

## TABLE OF CONTENTS

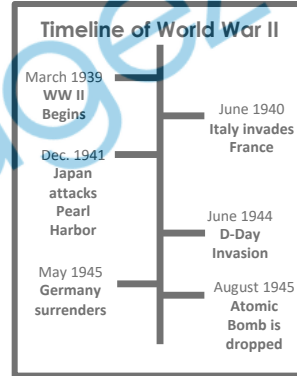
A **table of contents** is a list of the chapters in a text and the page number each chapter begins on. The **table of contents** helps readers by making it easy to find information quickly.

### Table of Contents

The Solar System .....	1
The Milky Way .....	9
The Earth .....	15
Our Sun .....	20
Taking Care of the Earth .....	26

# TIMELINES

A **timeline** is a graphic representation of information in chronological order. **Timelines** help readers by showing the order of events described in a text.



# TITLES

**Titles** are words or phrases on the cover of a book or at the top of an article. **Titles** help the reader by telling what the text is about.

